

VOTED BEST ROOM OF THE YEAR

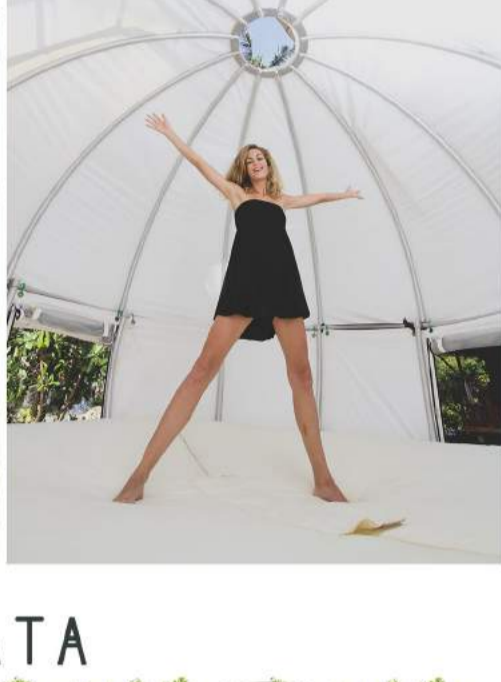
by the birds & you.



WHO DOES NOT WANT TO SLEEP IN A NEST HIDDEN IN THE TREES?

Reconnecting with nature

You will find the indelible sensations in this cocoon-like cabin suspended from the trees in the modern version. Today, your dreams of escape and tranquility can finally become reality with the Cocoon Tree that offers you a whole new experience and perspective of Glamping. Only one problem: being awakened early in the morning by the sound of birds that you will now have as neighbors ...



TECHNICAL DATA

FLOOR
10mm plate, water-resistant, laminated solid panel, in fiberglass

ULTRA-RESISTANT STRUCTURE
- Round top node / Aluminum
- Round lower node / Aluminum
- The top arc / Aluminum Stainless Steel
- The lower arc with fastenings for the floor / Aluminum Stainless Steel
- The horizontal arcs short / Aluminium Stainless Steel
& Connectors arcs, metal nodes, Zinc coating.

ACCESSORIES
External holder cocoon (rack) Bolts, nuts, lacing.

WATERPROOF MEMBRANE
Tent membrane top : 650g/m2 - PVC Waterproof Mehler
Tent membrane lower : 650g/m2 - PVC Waterproof Mehler
Removable entries : 1 zipped door with mosquito net & 2 transparent windows with mosquito net.
1 Sky transparent window & The baggage compartment.

THE COCOON TREE

can comfortably accommodate 2 people for a romantic honeymoon

or also a couple with 2 children to watch the shooting stars as a family...



WHERE AND HOW TO INSTALL IT? COCOON TREE

1. Suspended in the trees (2, or 3 it's the must!)
2. Placed on the ground with three adaptable feet
3. Hanging from a tree above a waterhole
4. Fixed on a platform above a lagoon
5. Placed on a floating platform
6. Surrounded by a floater



You can entrust the installation to our qualified installation team: trained mountaineers or boatsmen with valuable & practical experience of ropes and knots... You'll be safe and perfectly set in your Cocoon Tree. Twice a year, simply check the vertical links and lateral node connections, the trampoline and nets.

You can also mount your Cocoon Tree yourself, in which case you will find all the necessary instructions and installation guidance on the DVD included with your shipment.

WE ANSWER YOUR QUESTIONS COCOON TREE

- How the Cocoon Tree resists to rain and wind?**
- Its round shape allows it to withstand any climate. The wind will bypass and rain always flow and never stagnate.
- How heavy the Cocoon tree?**
- 90 kgs or 200 lbs empty.
- Is it really steady et secure?**
- Yes of course, The Cocoon tree is composed of 12 solid hooks. The aluminium structure and the membrane is extremely resistant and durable (Aluminium 6061 T6 & truck Tarpaulin).
- Is the Cocoon Tree customizable?**
- Yes it is ! You can customize the membrane with any picture, logo or design of your choice...



- Easily mountable & removable
- Steady & secure structure
- 100% Eco Friendly & zero impact
- Customizable & simply comfortable



COCOON TREE BED
Available options : Tropical & cold weather insulation - Off-grid energy system - Treepod (six specific feet to stand up the Cocoon if you don't have trees)



LET YOUR IMAGINATION RUN FREE & discover the Cocoon Village !

YOUR CONTACT:

Glamping Technology LTD
World Wide Head Office
00 33 (0)6 62 22 15 74 / contact@cocoon-tree.com